

Everybody was feeling alright and just kept on going

Pétur Eggertsson

Setup:

The piece is for 5-12 performers.

The score should be printed several times. Each performer should be distributed approx. 100 pages of music (in random order), on separate note stands. Amplification of the notestands is encouraged, but not necessary.

On every page there is a command and a number (except *archetype* pages, they have no number). Commands are diverse: pictures, words, notes, musical signs etc. The command shall be interpreted for the duration of the number given, e.g. a command with the number 23 shall be interpreted during 23 beats. After interpretation, **the page shall be thrown on the floor**. Every performer must keep playing until no pages are left on the stand.

When approx. three minutes have passed, a “conductor” (not from the group of performers) will start picking up pages from the floor and distribute them back onto the note stands. When more time has passed he/she may also distribute these pages to spectators. The conductor shall also find a way to get all spectators out of the venue before the piece is over.

Two floodlights or spotlights shall be placed in the front of the performance space. The lights control the tempo of the piece. The tempo shall start at 60 bpm and accelerate for 10 minutes until it reaches 120 bpm. This can be controlled by a digital light mixer or a pd patch provided by the composer.

A video animation of the score will also be provided and is projected behind the performers.

Interpretation:

Performers shall interpret the score freely. The score can be viewed as guidelines or rules for improvisation. The score shall be delivered to the performers in advance so they can make their own (or collaborative) key.

Four main types of commands are to be found in the score, there are 12 of each:

1. Notes shall be heard.

2. Pictures of instruments are commands for performers to find the essence of the instrument pictured. How does it sound? How does a performer of this instrument behave? Can you play your instrument like the instrument pictured?

3. Musical signs are self-explanatory.

4. Words shall be heard. Will you use your voice? Or your instrument? Is there another way? All words can appear in 12 languages.

On top of these main commands, there are six agents, which can enhance or interfere with the interpretation.

a. 12 Jungian archetypes describe the performers' psyche. One such page should be placed on top of each pile before performance. These pages all show one icon and have no number. These archetypes are borrowed from the theories of psycho-analyst Carl Jung and describe a psychological condition. They are often used in literary analysis. The archetypes are:

The Innocent (pacifier icon)

The Orphan / regular guy or girl (person walking icon)

The Hero (superhero icon)

The Caregiver (nurse with walking chair icon)

The Explorer (telescope icon)

The Rebel (middle finger icon)

The Lover (heart icon)

The Creator (lightbulb icon)

The Jester (jester icon)

The Sage (floating meditation icon)

The Magician (magician's hat and wand icon)

The Ruler (crown icon)

b. Colors of commands describe timbre or performance technique. It is encouraged to create a color key and stick to the key throughout the piece.

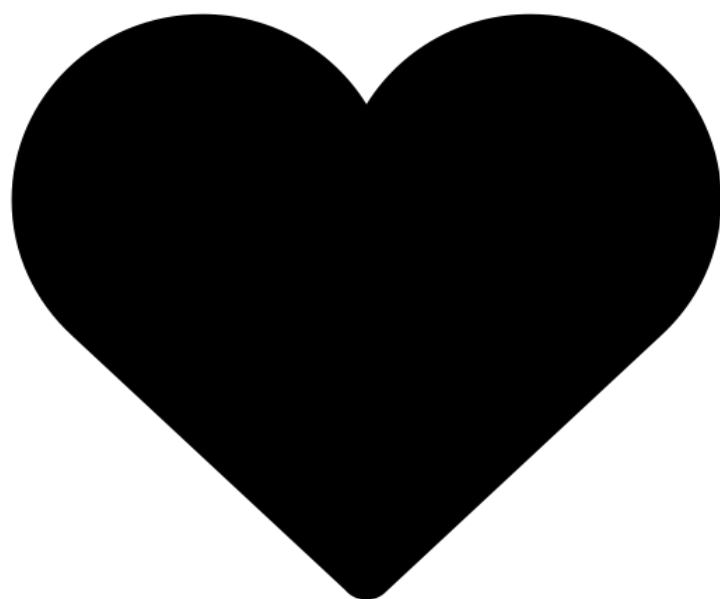
c. Size of commands may control dynamics.

d. Fonts may control rhythm.

e. Location of commands may also control dynamics and/or rhythm.

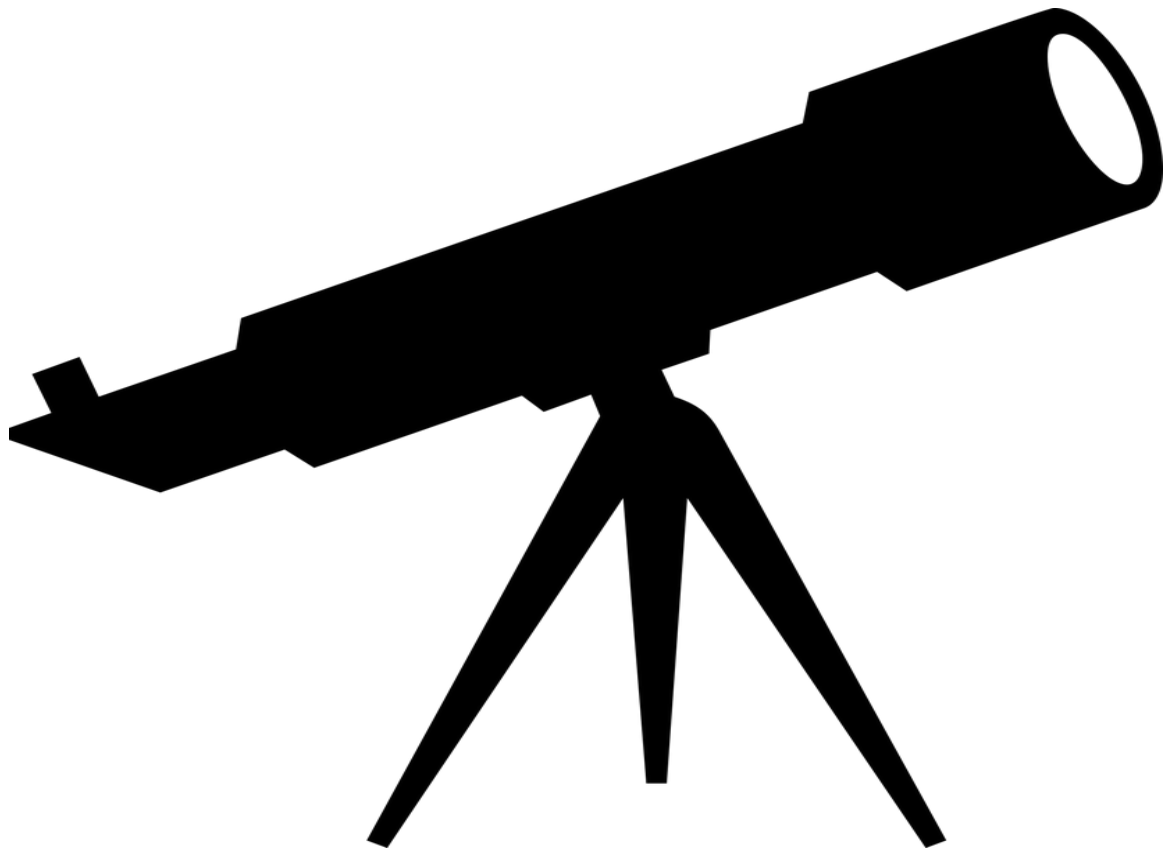
f. The number of commands may be interpreted freely.

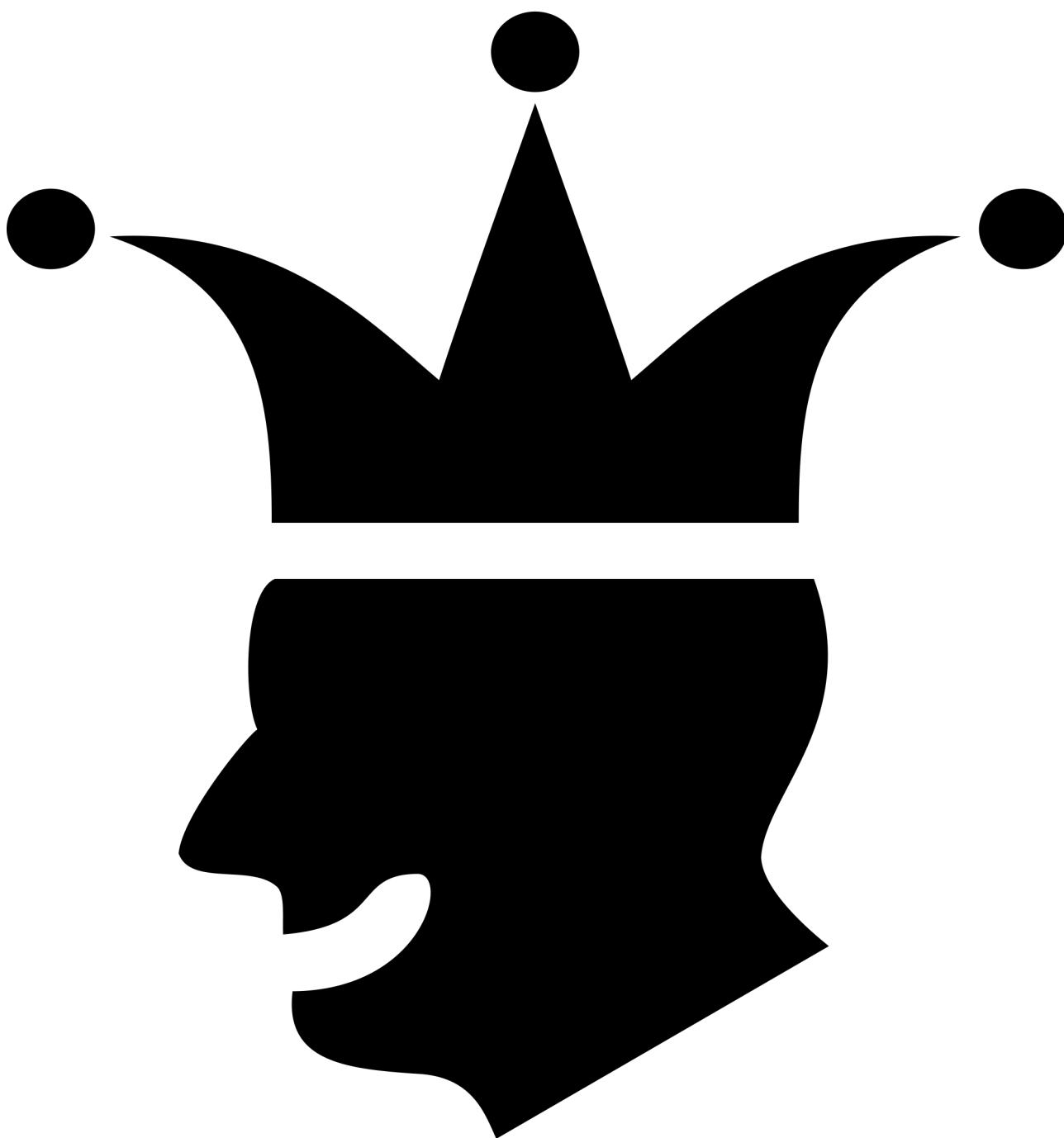
Have fun!

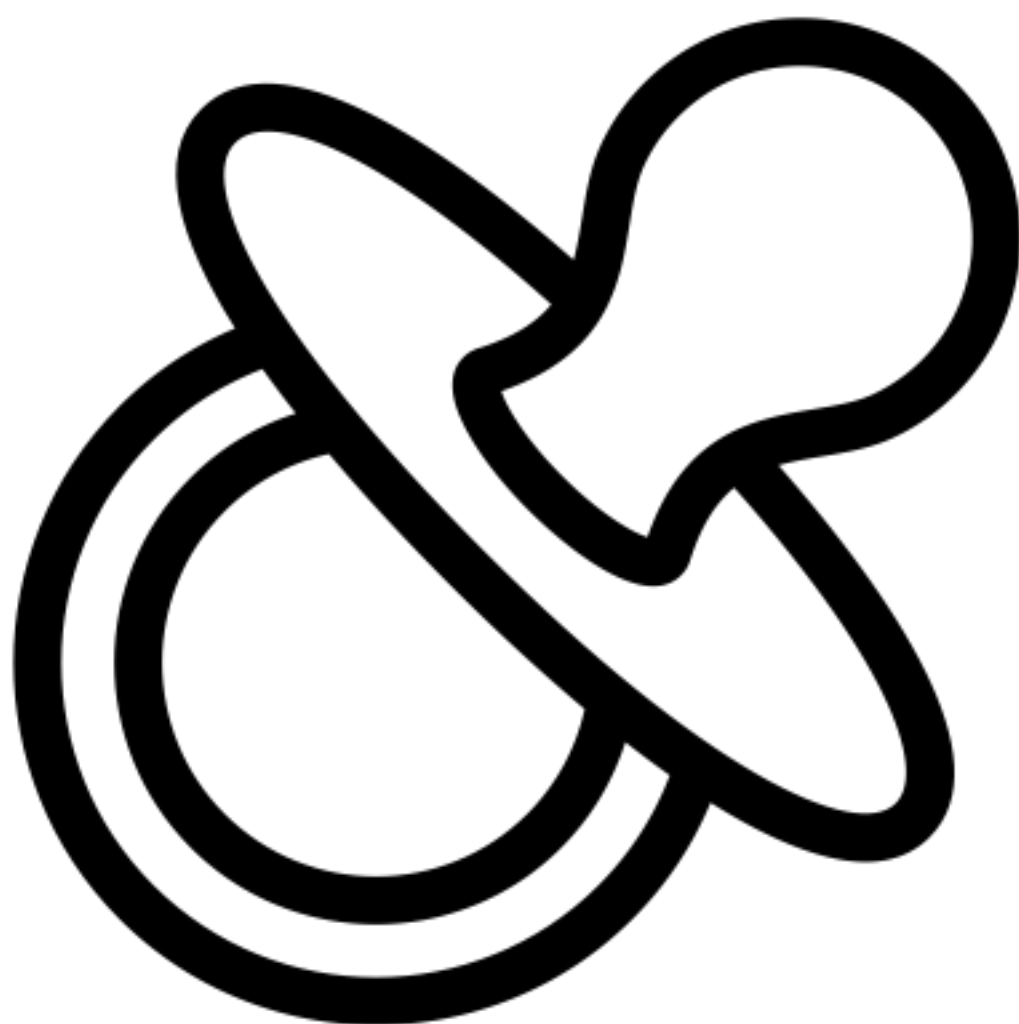






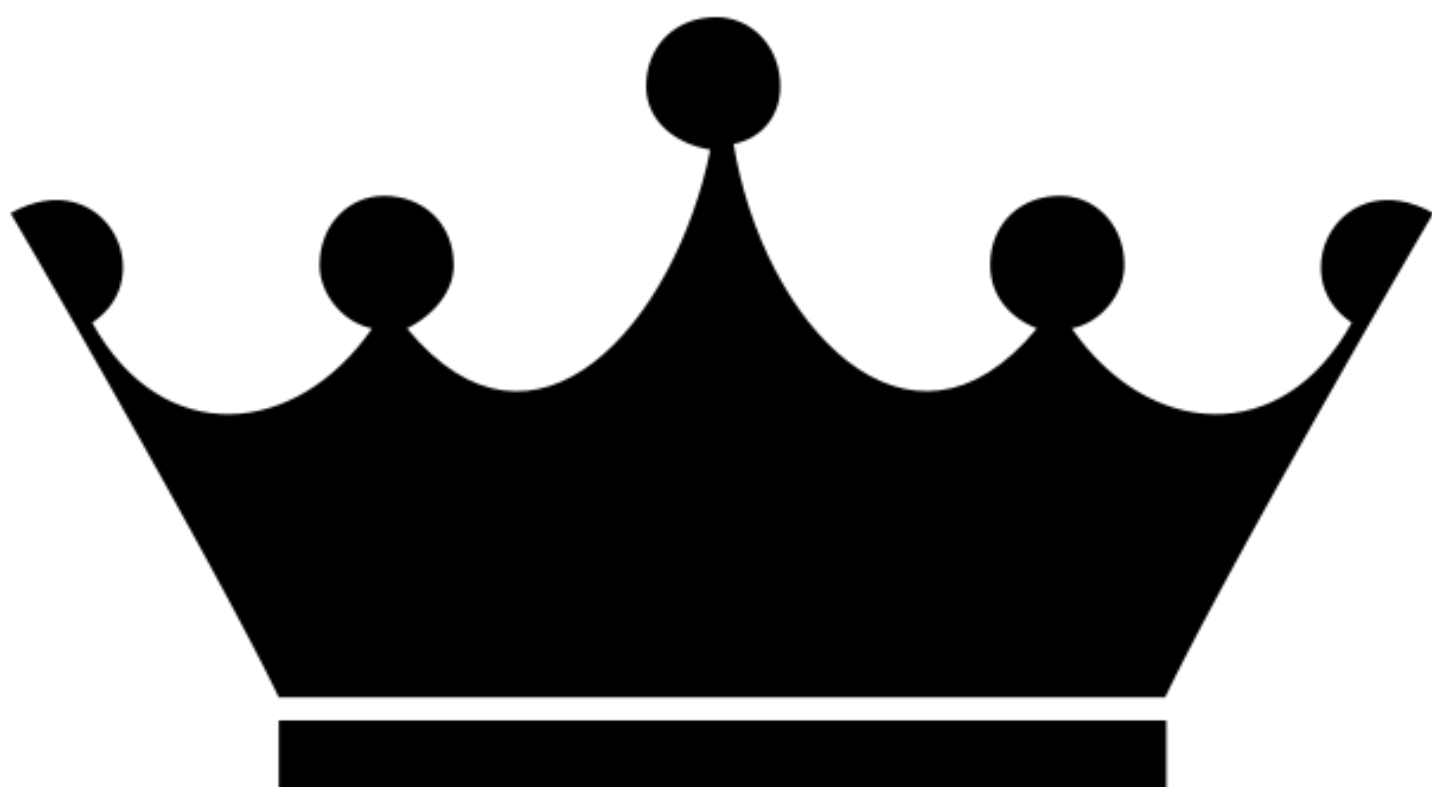


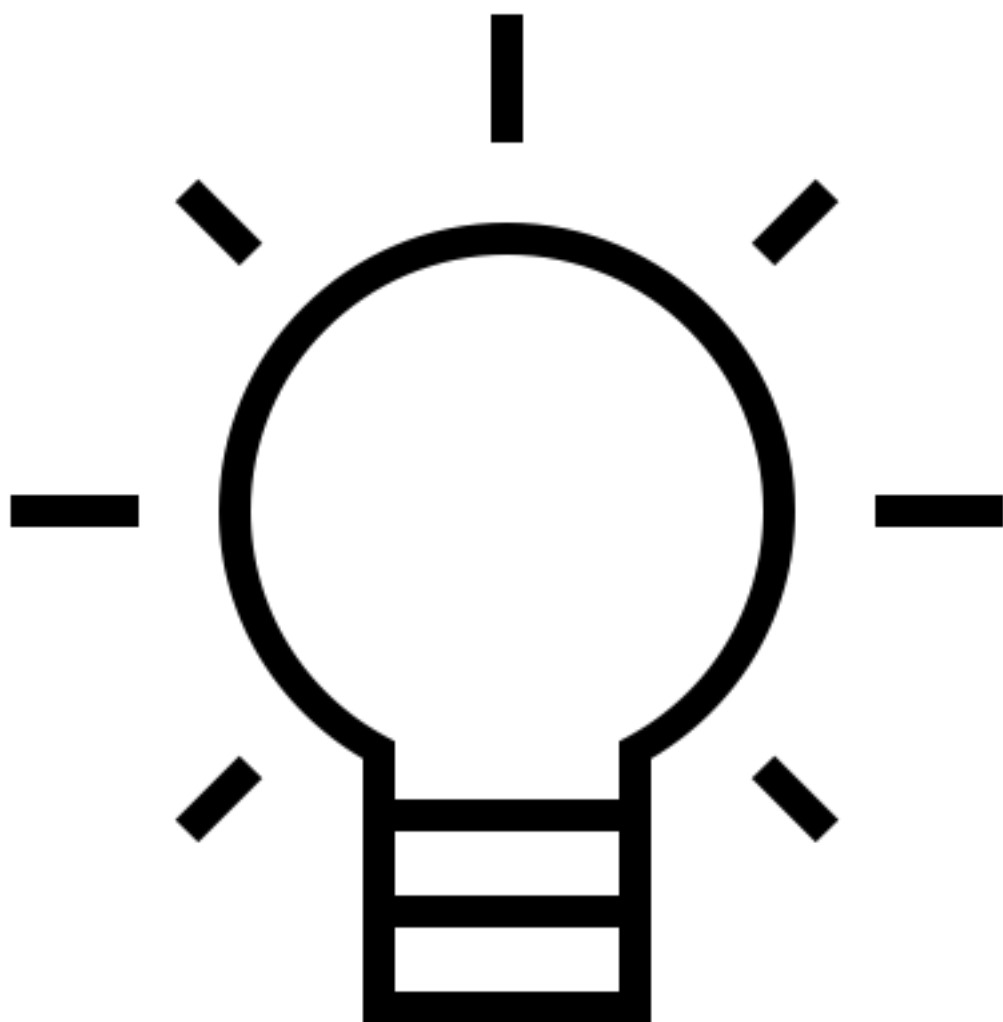




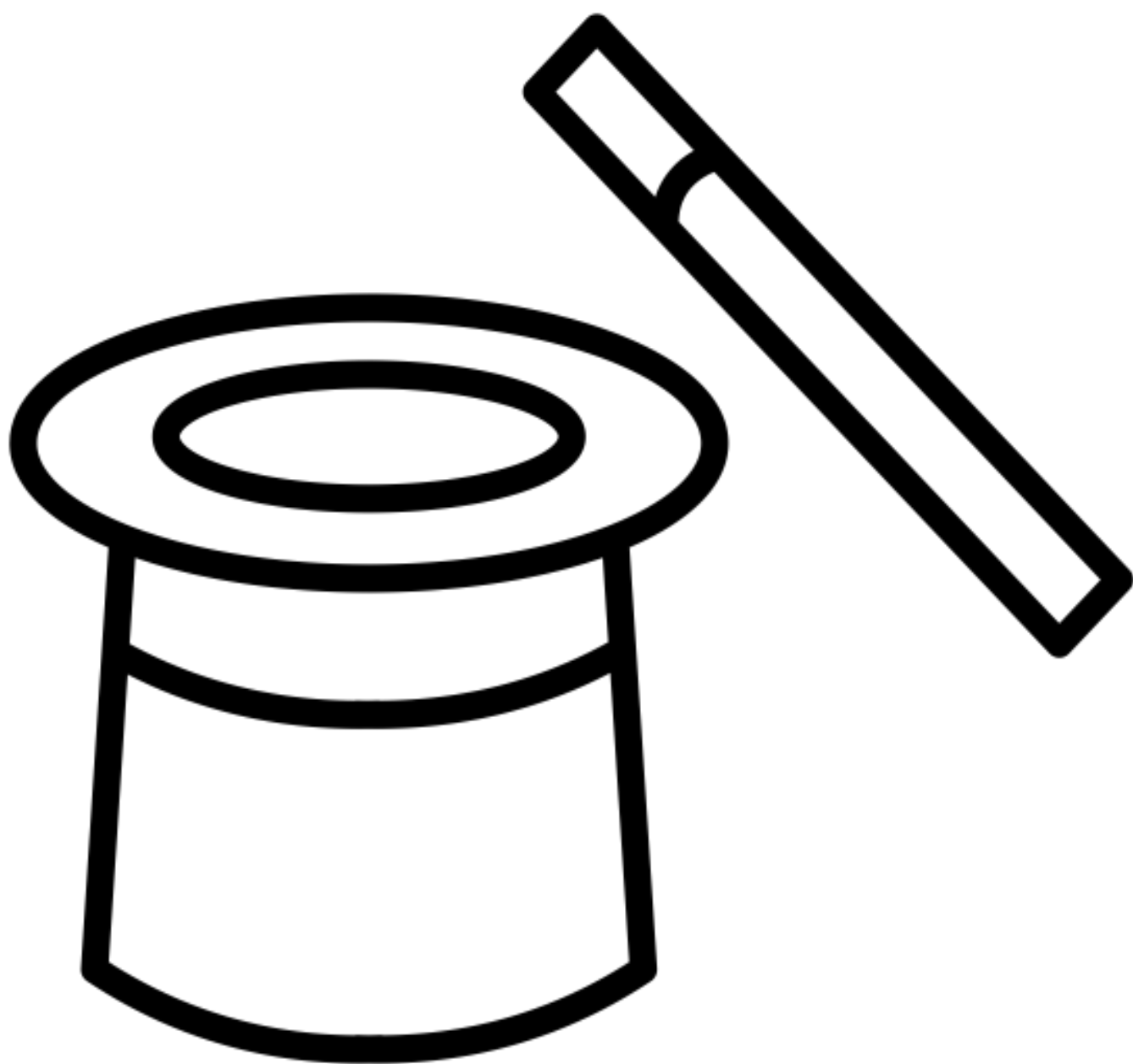












C

2

c

5

C

1

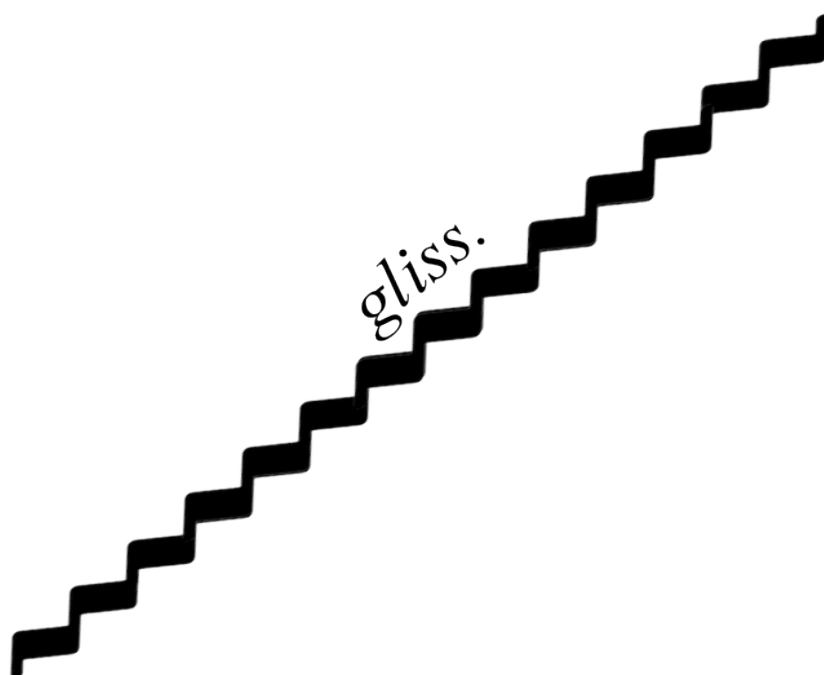


3

p

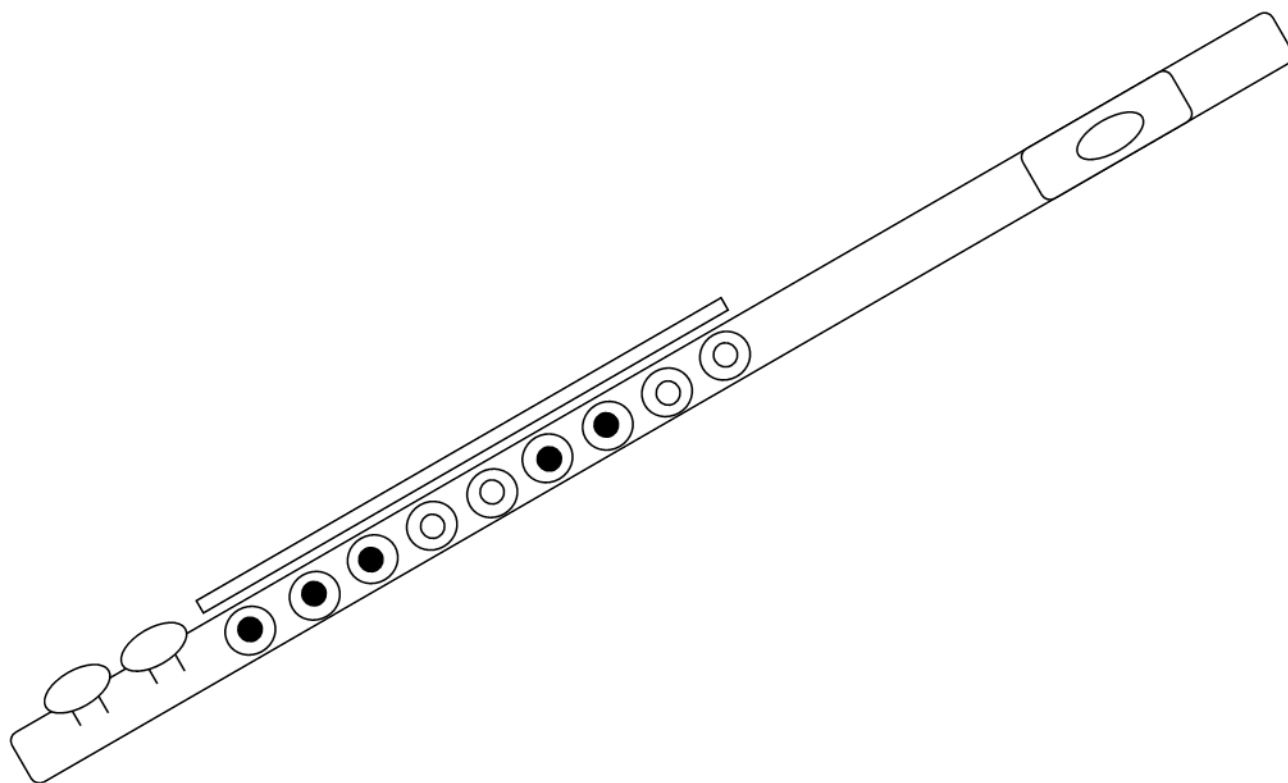
piano

gliss



lover

pizzicato





13

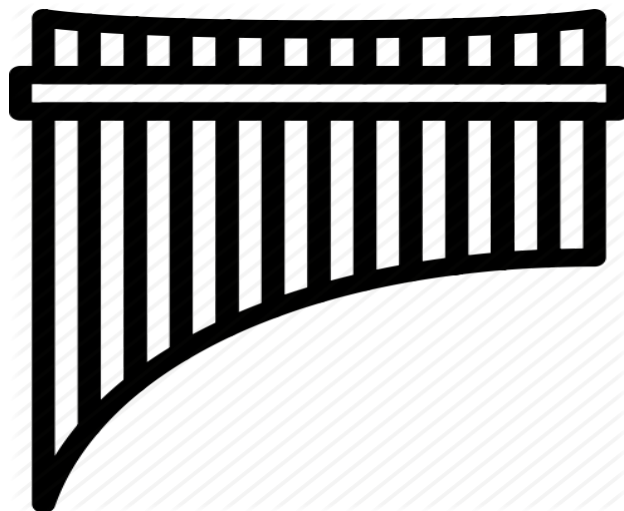
forte

f

2



gold



pizz.

b

7

as

2

orange

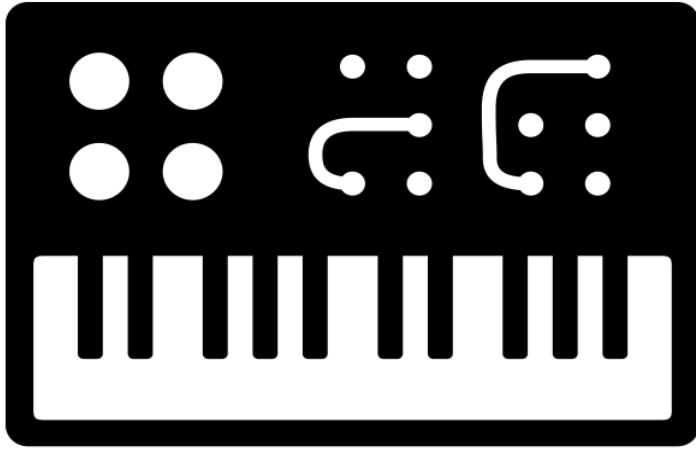
orange

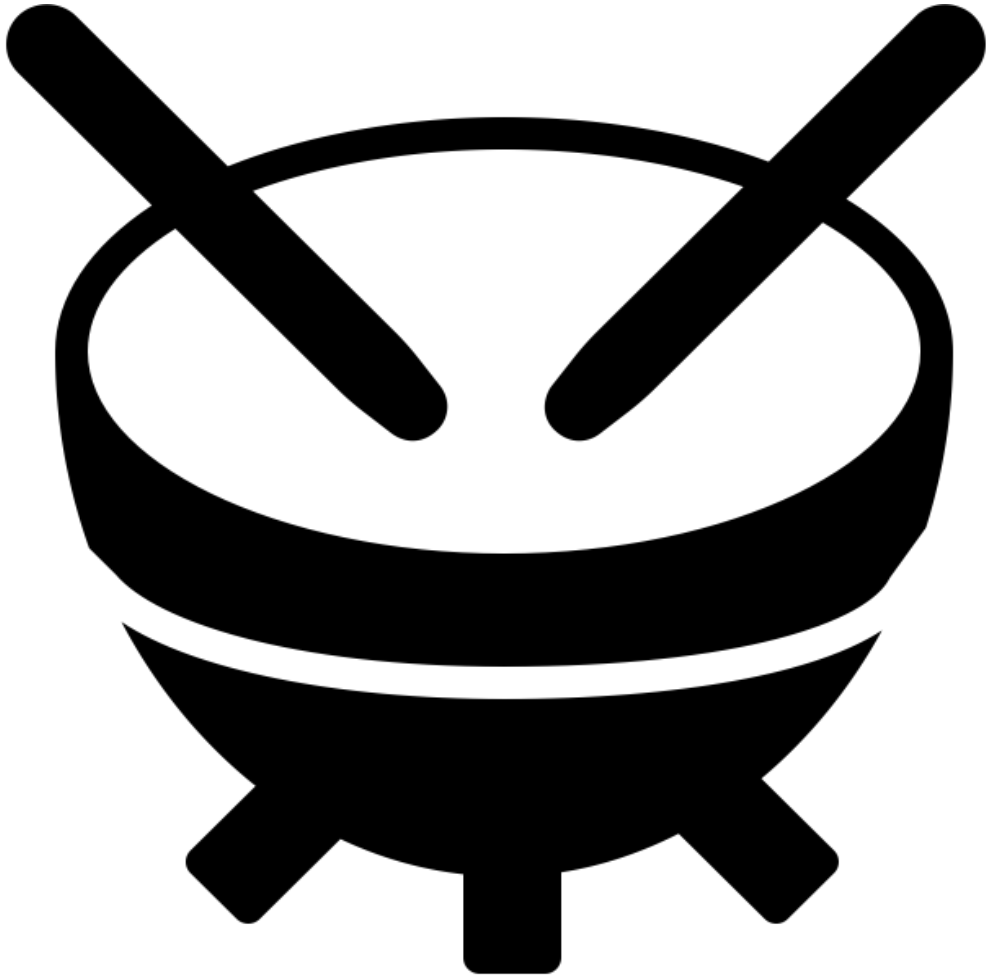
5

pizz.

C

1





23

fís

7

rouge

pákur

pákur

pákur

h

7

es



37

d

c

23

silfur

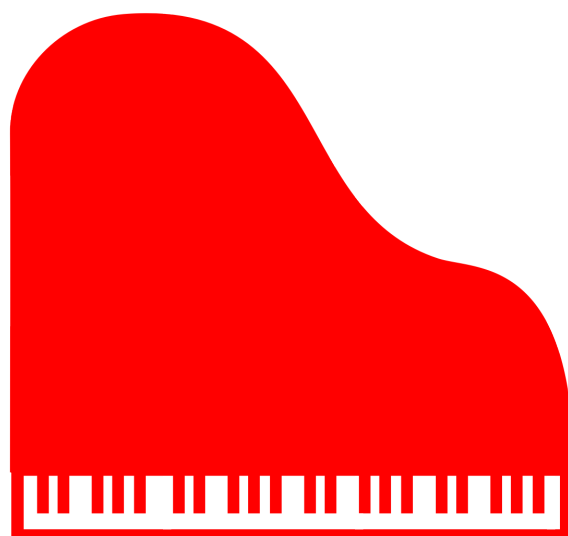
f

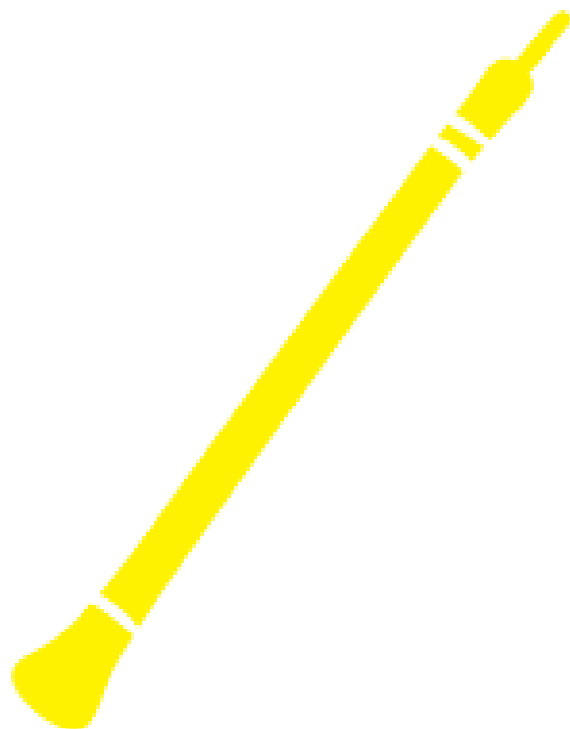
g

blár

verde

appelsínu
gulur





23



1

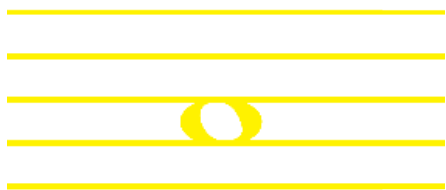


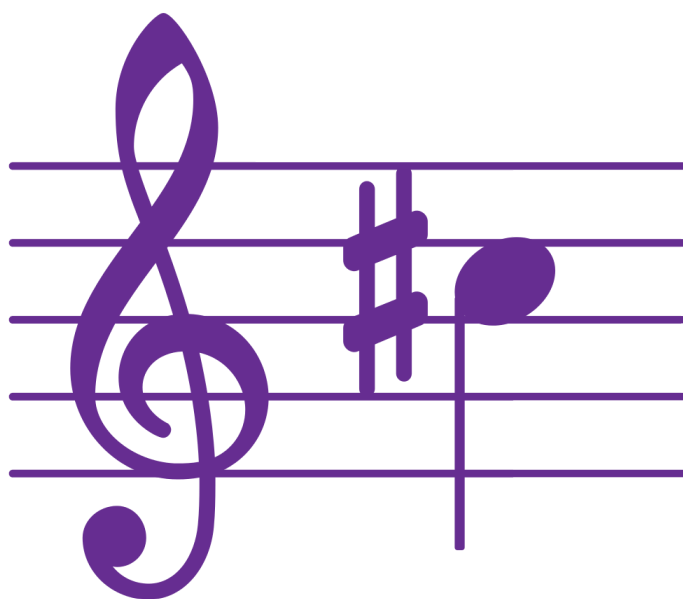
13

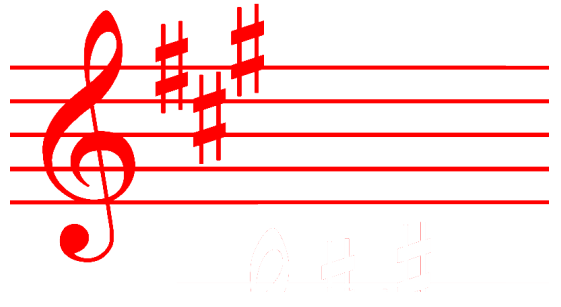
p

1

f







fiola

PÁKUR

panflauta

3

harpa

5

SNERILL

diminuendo

23

pögn

GLISSANDO

23

P122.

e

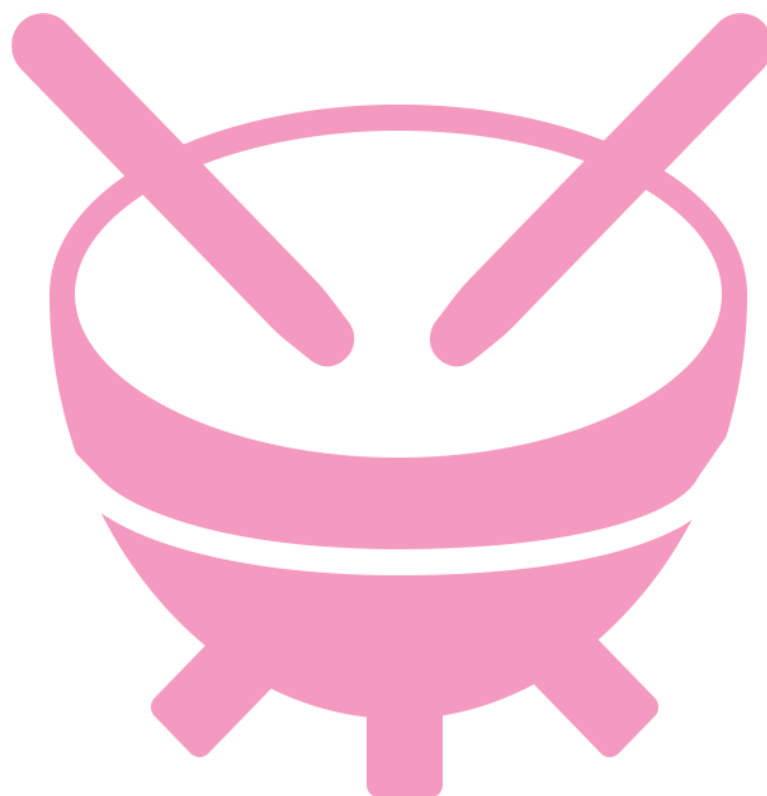
2

II

1

brúnn

grænn



31

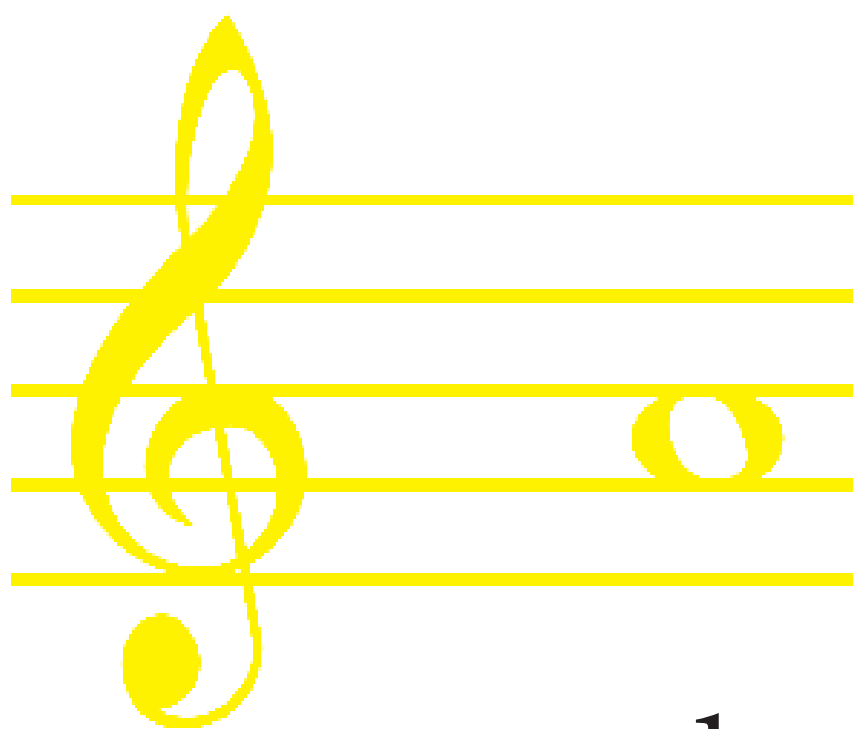


5

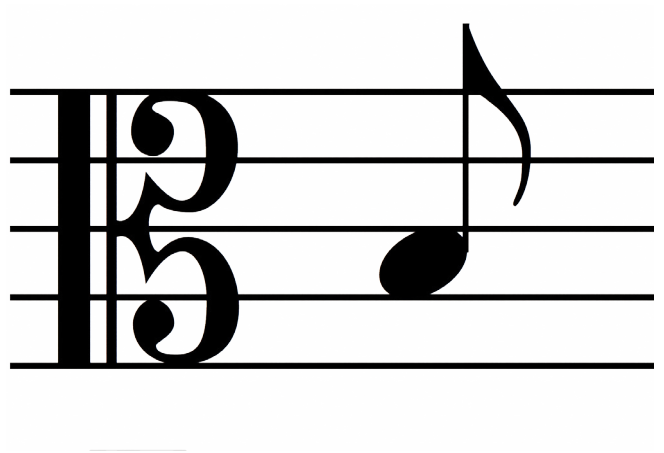


p

col legno



1







Hand



VIOLIN

13

oboe

2

horn

7

harp

PIANO

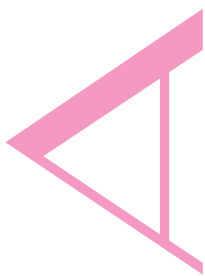
**electric
guitar**

23

5

1

med tre



7







BLUE

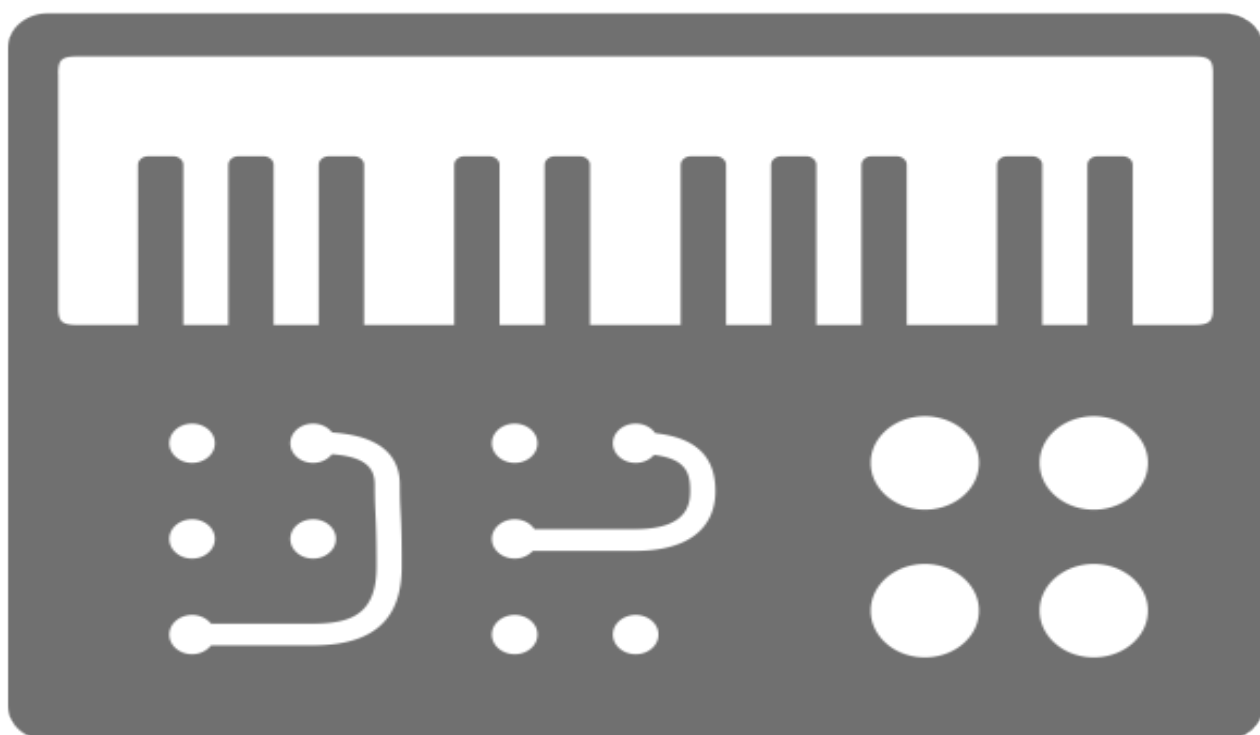
1

41.7

یٰۤاٰیُّہٰ

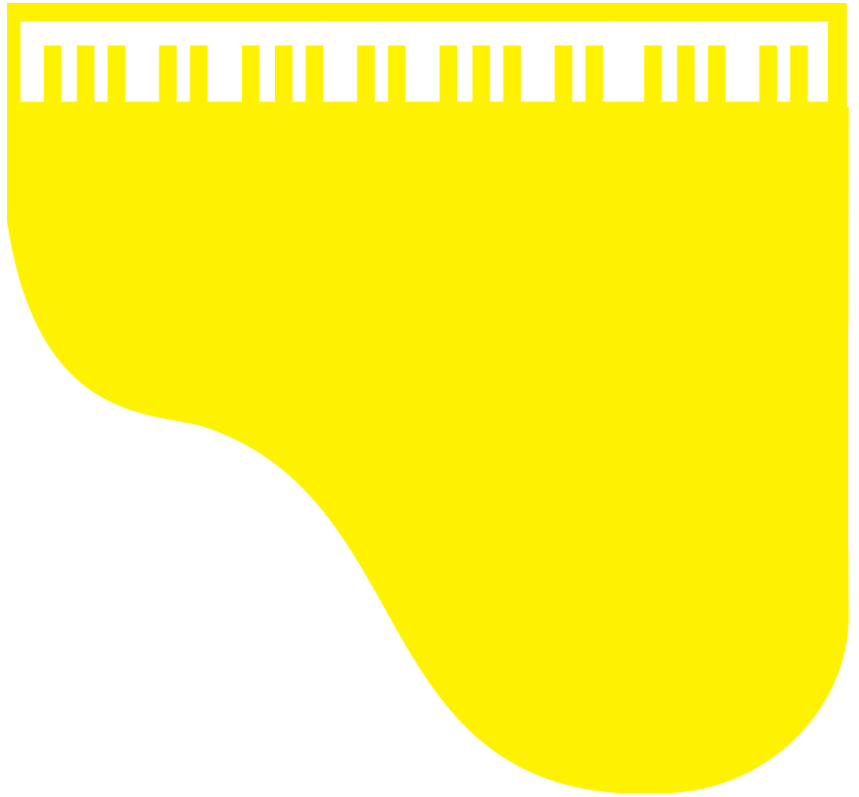








3

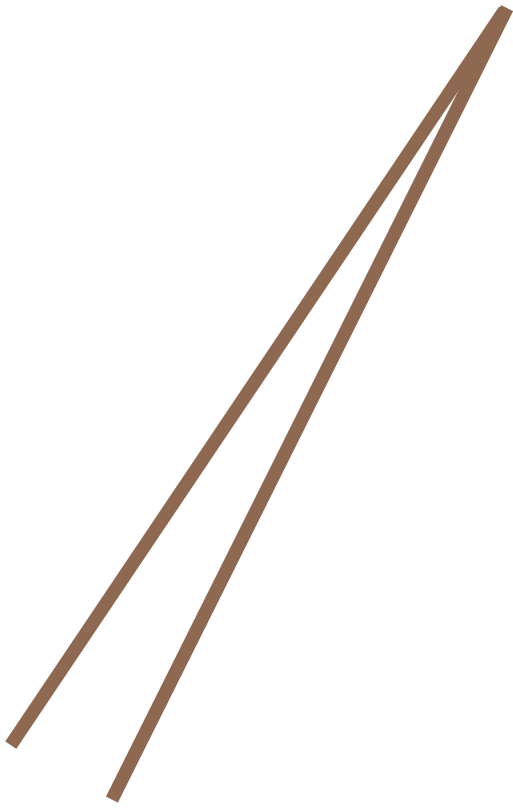


2



13





13

Pizz.

f

13





1



13

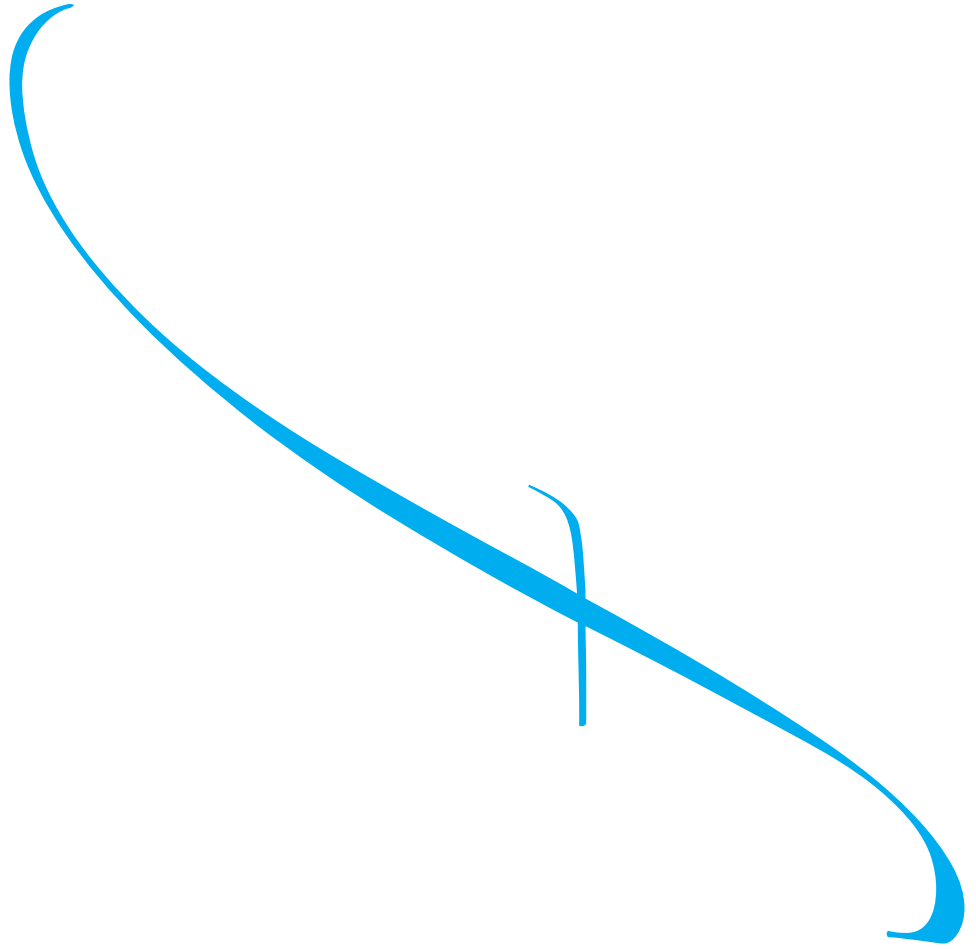
ジュニア・パ

Käytännön
Orovi.

تولويلا

SINNO

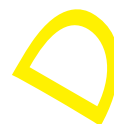
side





g

13



e

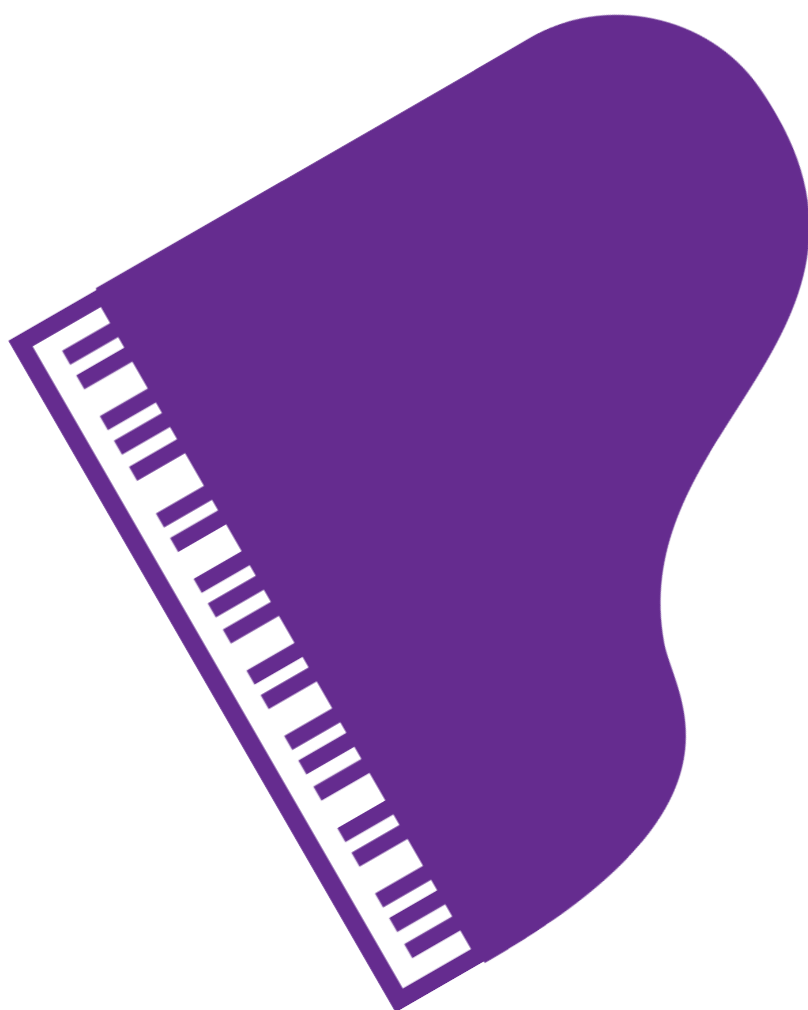


jaune

1

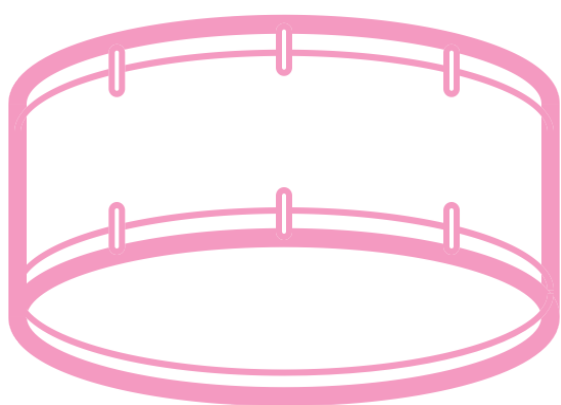
Silber

RØD



2



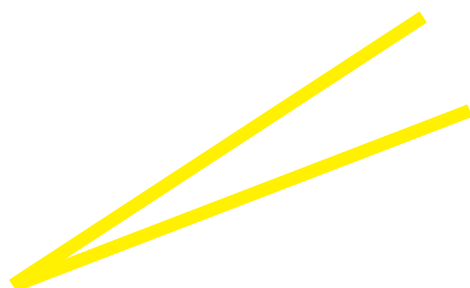


2

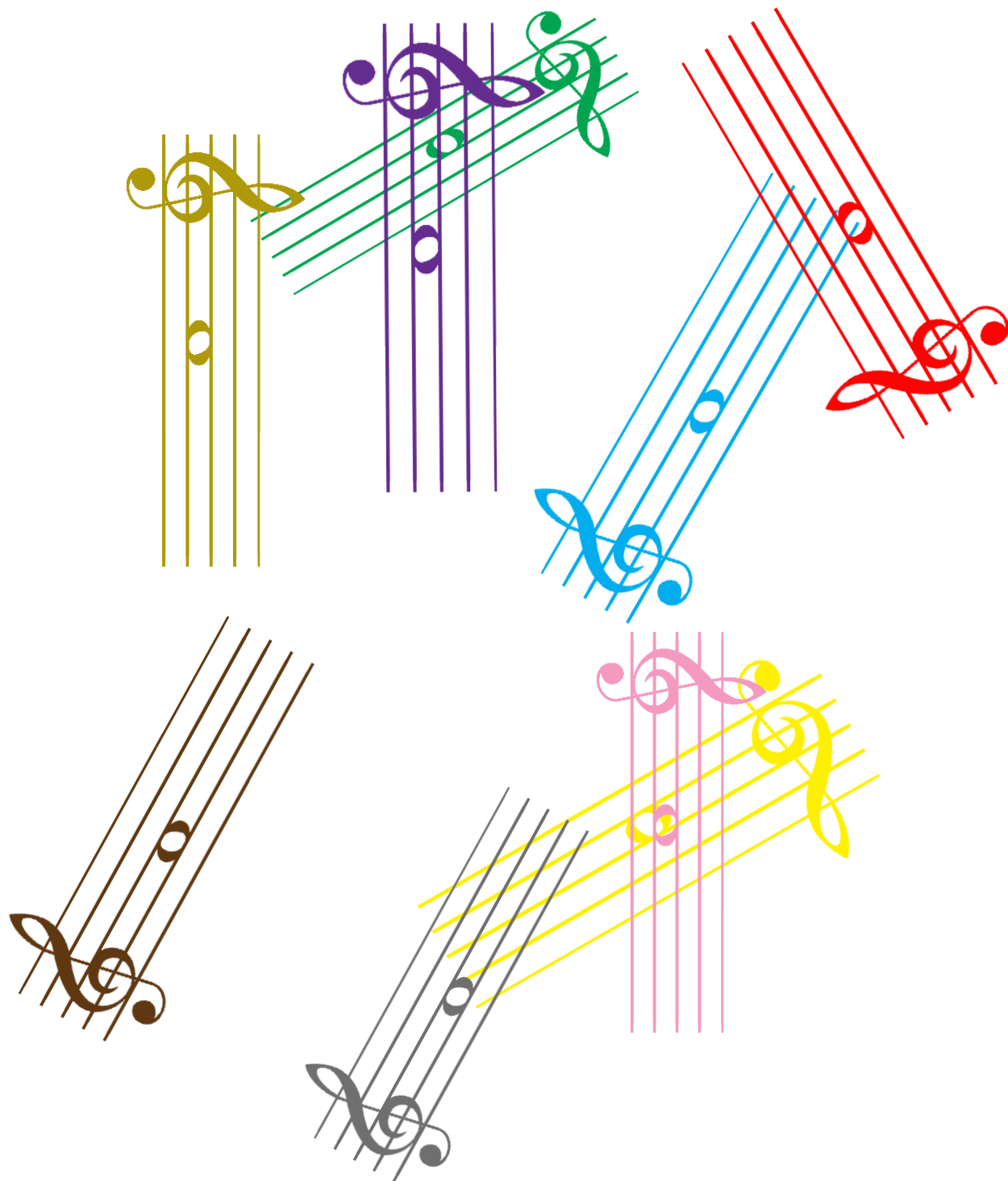


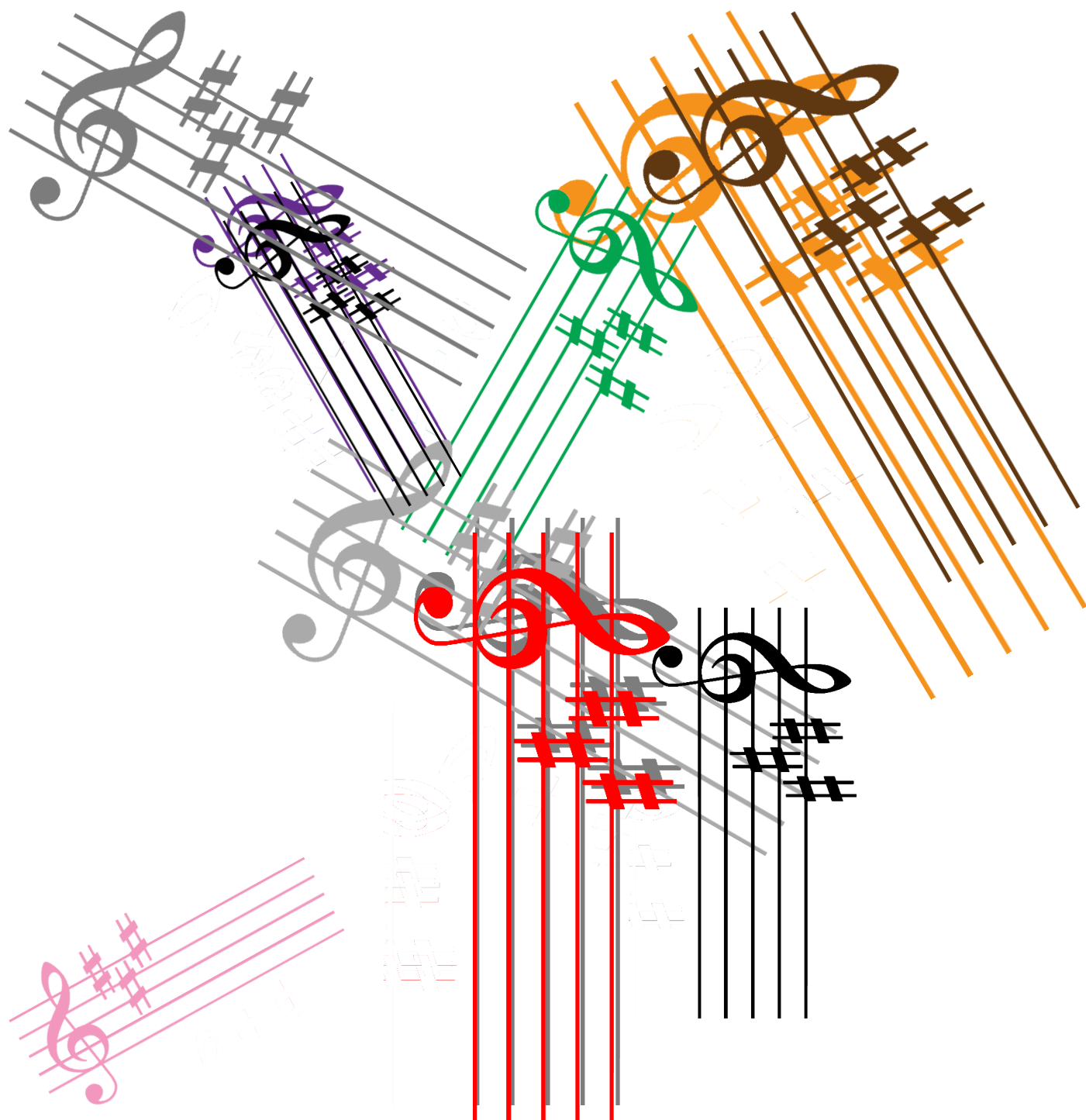


2



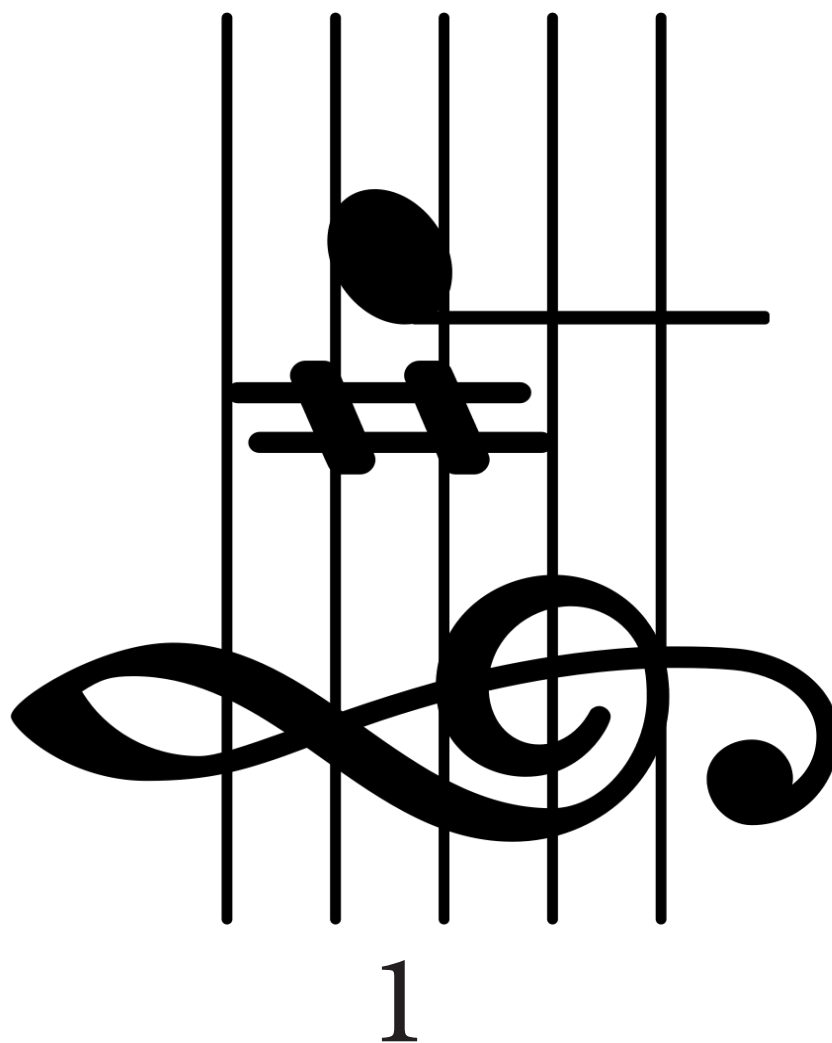
1















HORN

✓

✓ ✓ ✓ ✓ ✓ ✓ ✓ ✓ ✓ ✓

FRONT

Handwritten signature in green ink.

A word cloud featuring the word "violins" repeated multiple times in different colors (red, blue, yellow, grey) and orientations (horizontal, vertical, diagonal). The word is the central focus of the image.

Amfilata

Флейта Пана

Флейта Пана



Opuscolo
Glosser





f

f

f

f

f

1

fís

#f

fís

fís

fís

fís

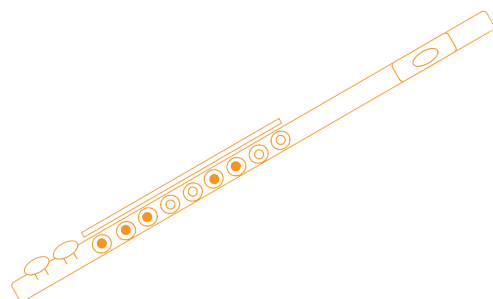
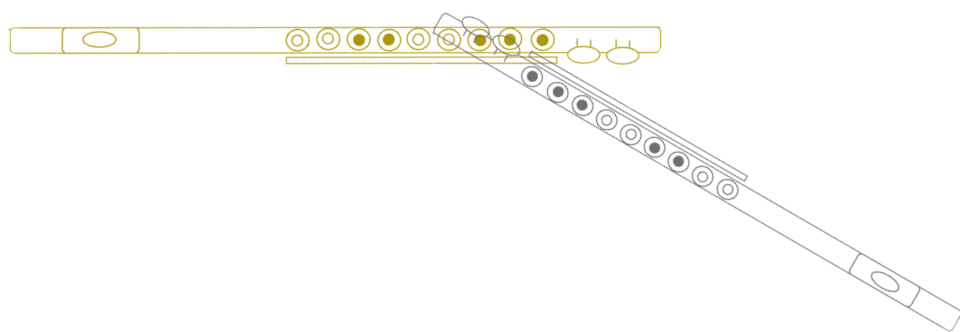
fís

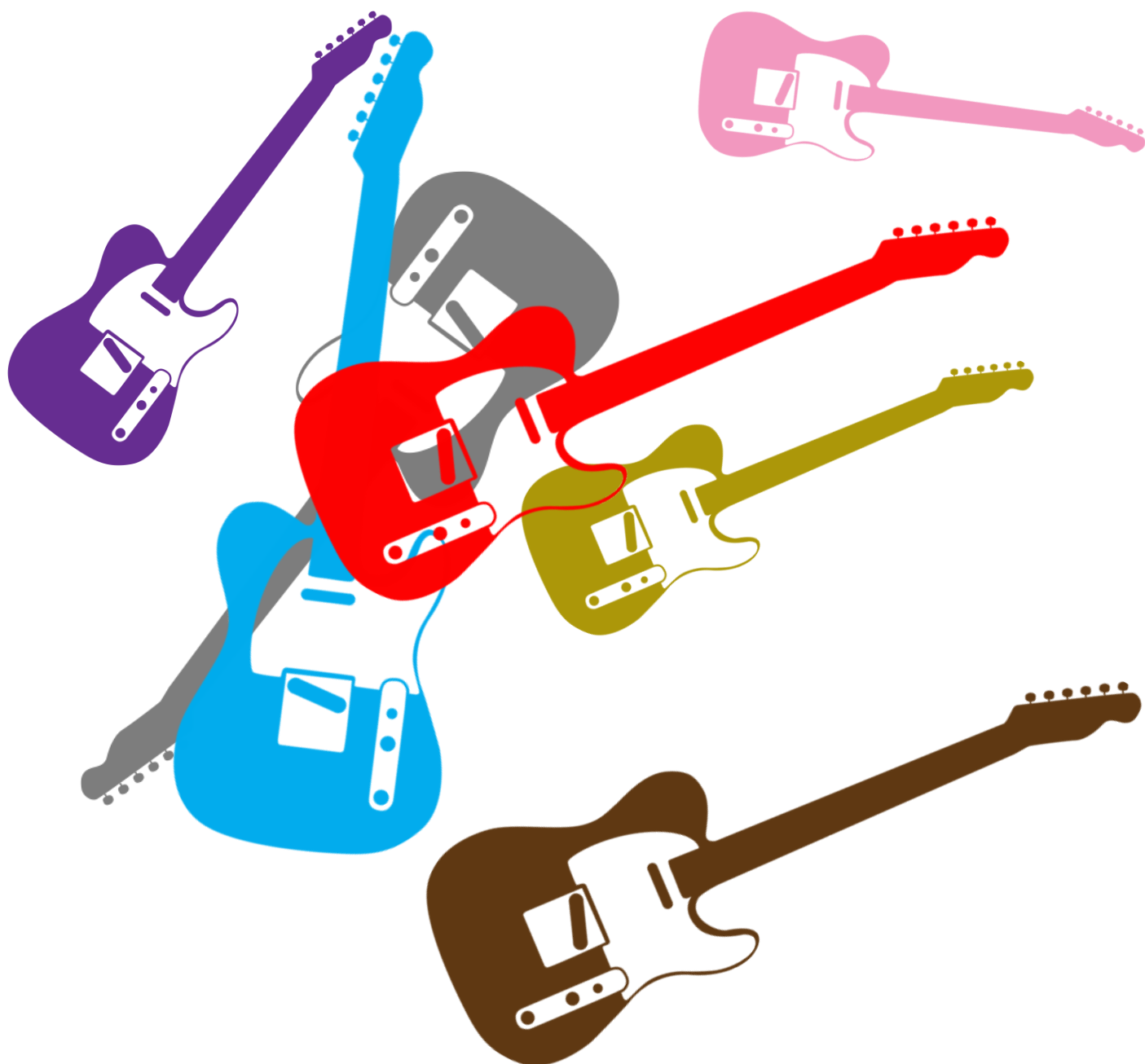


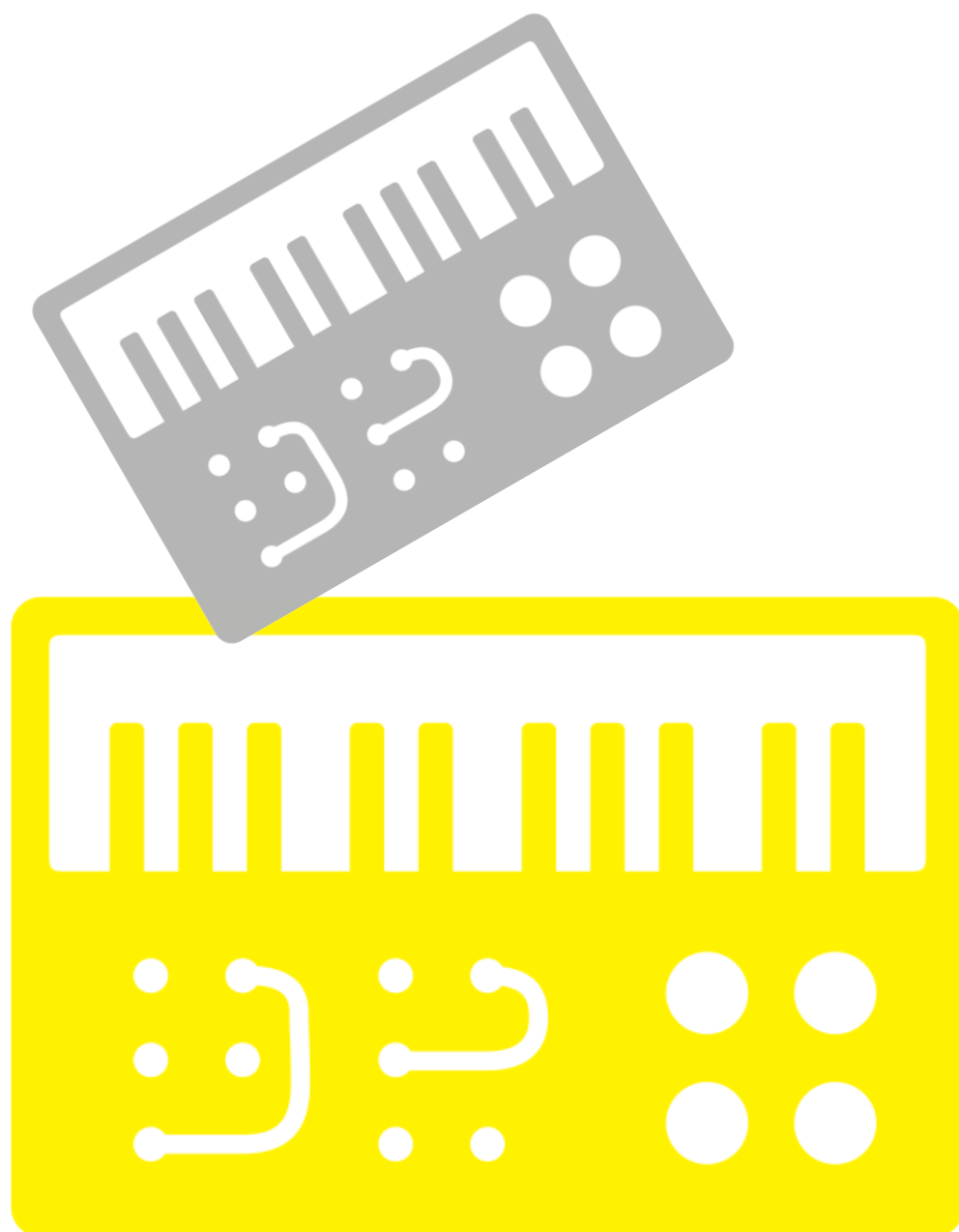
13

СИННИ
Nina
ГЛА
Gucci
bIue









13